

RESEARCH

Open Access



# Cerebrospinal fluid shunt surgery reduces the risk of developing dementia and Alzheimer's disease in patients with idiopathic normal pressure hydrocephalus: a nationwide population-based propensity-weighted cohort study

Pao-Hui Tseng<sup>1,2,3</sup>, Wan-Ting Huang<sup>4</sup>, Jen-Hung Wang<sup>4</sup>, Bor-Ren Huang<sup>5,6</sup>, Hsin-Yi Huang<sup>4\*</sup> and Sheng-Tzung Tsai<sup>1,3,6\*</sup>

## Abstract

**Background** Patients with idiopathic normal-pressure hydrocephalus (iNPH) are predisposed to developing dementing disorders. Cerebrospinal fluid (CSF) shunt implantation is a treatment used to improve the motor and cognitive disabilities of these patients; however, its effect on the risk of developing dementing disorders remains unclear. We conducted a population-based propensity-weighted cohort study to investigate whether CSF shunt surgery may reduce the risk of subsequently developing dementia, Alzheimer's disease (AD), and vascular dementia in iNPH patients.

**Methods** Patients aged  $\geq 60$  years who were diagnosed with iNPH ( $n=2053$ ) between January 2001 and June 2018 were identified from the Taiwan National Health Insurance Research Database. Various demographic characteristics (age, sex, and monthly income) and clinical data (incidence year, comorbidities, and Charlson comorbidity index) were collected and divided into the shunt surgery group (SSG) and the non-shunt surgery group (NSSG). Stabilized inverse probability of treatment weighting by using the propensity score was performed to achieve a balanced distribution of confounders across the two study groups. The cumulative incidence rate and risk of dementing disorders were estimated during a 16-year follow-up period.

**Results** After weighting, the data of 375.0 patients in SSG and 1677.4 patients in NSSG were analyzed. Kaplan–Meier curve analysis indicated that the cumulative incidence rate of AD ( $p=0.009$ ), but not dementia ( $p=0.241$ ) and vascular dementia ( $p=0.761$ ), in SSG was significantly lower than that in NSSG over the 16-year follow-up period. Cox proportional hazards regression analysis revealed that SSG had a reduced hazard ratio (HR) for developing AD [HR (95% CI) 0.17 (0.04–0.69)], but not for dementia [HR (95% CI) 0.83 (0.61–1.12)] and vascular dementia [HR (95% CI) 1.18

\*Correspondence:

Hsin-Yi Huang

hyhuang@tzuchi.com.tw

Sheng-Tzung Tsai

flydream.tsai@gmail.com

Full list of author information is available at the end of the article



© The Author(s) 2024. **Open Access** This article is licensed under a Creative Commons Attribution 4.0 International License, which permits use, sharing, adaptation, distribution and reproduction in any medium or format, as long as you give appropriate credit to the original author(s) and the source, provide a link to the Creative Commons licence, and indicate if changes were made. The images or other third party material in this article are included in the article's Creative Commons licence, unless indicated otherwise in a credit line to the material. If material is not included in the article's Creative Commons licence and your intended use is not permitted by statutory regulation or exceeds the permitted use, you will need to obtain permission directly from the copyright holder. To view a copy of this licence, visit <http://creativecommons.org/licenses/by/4.0/>. The Creative Commons Public Domain Dedication waiver (<http://creativecommons.org/publicdomain/zero/1.0/>) applies to the data made available in this article, unless otherwise stated in a credit line to the data.

(0.44–3.16)], compared with NSSG. Further Fine–Gray hazard regression analysis with death as a competing event demonstrated that SSG had a reduced subdistribution HR (sHR) for developing dementia [sHR (95% CI) 0.74 (0.55–0.99)] and AD [sHR (95% CI) 0.15 (0.04–0.61)], but not for vascular dementia [sHR (95% CI) 1.07 (0.40–2.86)].

**Conclusion** CSF shunt surgery is associated with reduced risks of the subsequent development of dementia and AD in iNPH patients. Our findings may provide valuable information for assessing the benefit-to-risk profile of CSF shunt surgery.

**Keywords** Idiopathic normal-pressure hydrocephalus, Cerebrospinal fluid shunt surgery, Dementia, Alzheimer's disease, Vascular dementia

## Introduction

Idiopathic normal-pressure hydrocephalus (iNPH) is a potentially treatable neurological disorder among the elderly population; it is characterized clinically by dilated cerebral ventricles and the triad of gait disturbance, urinary incontinence, and cognitive deficit without any recognized cause [1–3]. The incidence of iNPH ranges from 10 per 100,000 to 22 per 100,000 overall, with 1.30% among those aged  $\geq 65$  years and 5.9% among those aged  $\geq 80$  years [4, 5]. Although the pathogenesis of iNPH remains largely unclear, communicating hydrocephalus resulting from an excess accumulation of cerebrospinal fluid (CSF) due to an imbalance between its formation and removal is generally believed to initiate a vicious cycle of neurological damages in iNPH [3]. Guidelines recommend CSF shunt implantation, including ventriculo-peritoneal and lumboperitoneal shunts, as treatment for improving motor (gait disturbance and urinary incontinence) and cognitive disabilities among iNPH patients [6, 7]. Several studies have demonstrated that CSF shunt surgery can improve these outcomes in iNPH patients [1, 6–10]. However, not all iNPH patients undergo CSF shunt surgery [1, 6, 7, 10, 11], and the decision is typically based on the conjoined input of the neurologist, patient, and his/her family members after a full discussion and assessment of its risks and benefits [12].

Several studies [13–15] have reported that 21%–73% of non-shunted or shunted iNPH patients developed Alzheimer's disease (AD) or vascular dementia during a median follow-up period of 4.8–5.3 years. The analysis of biomarkers by using brain biopsies obtained during CSF shunt surgery revealed a high prevalence of typical AD histological findings, suggesting pre-stage AD in iNPH patients [16, 17]. A report from the task force of the International Society for Hydrocephalus and Cerebrospinal Fluid Disorders (ISHCSF) [18] proposed that iNPH may increase the risk of AD and other dementing disorders. iNPH and AD have been hypothesized to have a common physiological basis in CSF circulatory dysfunction and failure, and the risk of AD may increase once iNPH takes hold [19]. When taken together, these studies suggest that shunted and non-shunted iNPH

patients are predisposed to developing dementing disorders. However, the effect of CSF shunt surgery on the risk of developing dementing disorders among iNPH patients remains unclear.

The objective of the current study was to investigate whether CSF shunt surgery may reduce the risk of developing dementing disorders, including dementia, AD, and vascular dementia, among iNPH patients over time. We used a nationwide population-based dataset to conduct a propensity-weighted cohort study to achieve this goal. Patients were classified into the shunt surgery group (SSG) and the non-shunt surgery group (NSSG) for the subsequent risk analysis.

## Methods

### Data sources

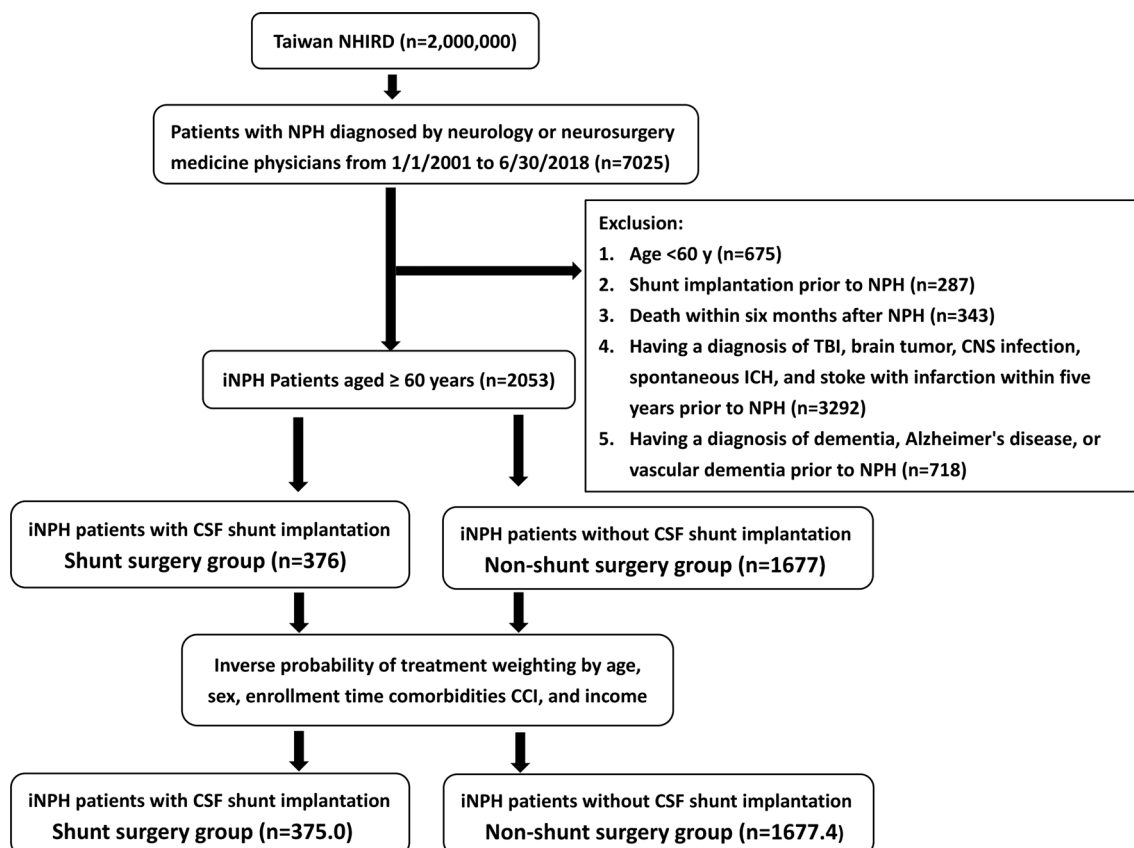
A population-based propensity-weighted cohort study was conducted using the Taiwan National Health Insurance Research Database (NHIRD) from 2000 to 2018. The National Health Insurance program provides the entire population of Taiwan with universal health insurance and covers 99% of their healthcare needs and medical services. NHIRD has detailed medical records of each patient, including information about basic demographic variables, outpatient visits, patient admissions, surgical procedures, medication prescriptions, and health providers [20]. In the current study, we used the de-identified dataset that comprised 2 million subjects who were randomly selected from the list of National Health Insurance beneficiaries. This de-identified dataset was released by the Data Science Center of the Ministry of Health and Welfare of Taiwan for approved research projects [20, 21]. The collected disease diagnostic codes were based on coding systems, including the codes of the International Classification of Diseases, Ninth Revision, Clinical Modification (ICD-9-CM) and its Tenth Revision (ICD-10-CM) (Additional file 1: Table S1). Their validity and accuracy have been demonstrated in previous studies [20, 21]. Moreover, procedure and Anatomical Therapeutic Chemical (ATC) codes were used to identify types of surgery and drug prescriptions, respectively (Additional file 1: Table S1). Patients with iNPH, dementia, AD, and

vascular dementia were identified using diagnostic codes. ATC codes were additionally used to identify patients with dementia, while procedure codes were used to identify patients with CSF shunt surgery. This study was approved by the Institutional Review Board of Hualien Tzu Chi Hospital (IRB110-161-C). For this retrospective study, informed consent was waived in accordance with the institutional guidelines.

### Study cohort and design

We searched the NHIRD records from January 2001 to June 2018 to identify patients diagnosed with normal-pressure hydrocephalus (NPH) (Fig. 1). The exclusion criteria were as follows: (1) patients aged < 60 years; (2) patients with CSF shunt implantation prior to the diagnosis of NPH; (3) patients who died within 6 months after the diagnosis of NPH; (4) patients diagnosed with traumatic brain injury, brain tumor, central nervous system infection, spontaneous intracerebral hemorrhage, or stroke with infarction within 5 years prior to the diagnosis of NPH; and (5) patients diagnosed with dementia, AD, or vascular dementia prior to the

diagnosis of NPH. NPH patients were included only if they had one record of hospitalization or at least two records of outpatient visits with the diagnosis as suggested by a previous study [22]. In Taiwan, the diagnosis of NPH usually was made by neurologists or neurosurgeons based on the recommendations from the Japanese Guidelines [23, 24], which were available during the study period. The diagnosis usually was made based on clinical symptoms, radiological findings, and findings from CSF drainage tests. The diagnosis of dementia, AD, or vascular dementia usually was made based on the recommendations from the relevant Guidelines [25–27]. After exclusion, the included subjects were defined as iNPH patients aged  $\geq 60$  years (Fig. 1). These iNPH patients were then classified into two study groups. One group (SSG) received CSF shunting placement surgery within 6 months after being diagnosed with iNPH, whereas the other group (NSSG) did not receive CSF shunting placement surgery. The index date was set as 1 year after the diagnosis date of iNPH. The follow-up period was initiated from the index date and ended with either the occurrence of the event, death,



**Fig. 1** Patient selection flowchart. NHIRD, National Health Insurance Research Database. iNPH, idiopathic normal-pressure hydrocephalus. CSF, cerebrospinal fluid. TBI, traumatic brain injury. CNS, central nervous system. ICH, intracerebral hemorrhage. CCI, Charlson comorbidity index

withdrawal from the insurance system, or December 31, 2018, whichever came first.

### Covariates and outcomes

Basic demographic data, including age, sex, and monthly income, were collected. Comorbidities, including coronary artery disease, chronic kidney disease, hypertension, and type II diabetes mellitus, were identified through the corresponding ICD-9-CM and ICD-10-CM codes (Additional file 1: Table S1) and used to calculate the Charlson comorbidity index (CCI). The outcomes of this study were the events of dementing disorders, including dementia, AD, and vascular dementia, occurring during the follow-up period identified by the corresponding ICD-9-CM, ICD-10-CM, and ATC codes (Additional file 1: Table S1).

### Statistical analysis

Continuous variables were presented as mean  $\pm$  standard deviation. Categorical variables were presented as frequencies and percentages. To reduce bias due to confounding factors, we calculated propensity scores to estimate the probability of patients being assigned to SSG and NSSG via a logistic regression model. The model included age, sex, income level, incidence year, CCI, and comorbidities. Stabilized inverse probability of treatment weighting (IPTW) [28, 29] by using the propensity score was then performed to create a weighted pseudo population, and then the difference in the baseline covariates was examined in accordance with the value of the standardized mean difference (SMD).  $SMD < 0.1$  indicated a negligible difference between the two study cohorts. The Kaplan–Meier method was used to estimate the cumulative incidence rate of dementing disorders during the 16-year follow-up period. The log-rank test was conducted to evaluate the differences between the two study groups. The risk of dementing disorders (dementia, AD, or vascular dementia) was evaluated using a univariate Cox proportional hazards regression model that estimates the hazard ratio (HR) and 95% confidence interval (CI). In addition, a univariate Fine–Gray subdistribution hazard competing risk regression model [30, 31] with death as a competing event was used to estimate the subdistribution HR (sHR) and 95% CI of dementing disorders. Statistical analyses were performed using SAS software version 9.4 and Stata version 15. A  $p$  value of  $< 0.05$  was considered statistically significant.

### Results

During the study period, 7025 NPH patients were identified. After exclusion, 2053 iNPH patients aged  $\geq 60$  years were enrolled in this study and classified into SSG ( $n=376$ ) and NSSG ( $n=1677$ ). Before IPTW (Table 1),

SSG had a smaller mean age, smaller percentage of patients with age  $\geq 80$ , smaller percentage of patients with monthly income  $\leq 15839$  new Taiwan dollar (NTD), greater percentage of patients with monthly income 15840–24999 NTD, smaller percentage of patients during the incidence year of 2007–2012, greater percentage of patients during the incidence year of 2013–2018, higher mean CCI score, smaller percentage of patients with coronary artery disease, and higher percentage of patients with hypertension compared with NSSG. Propensity score matching and stabilized IPTW were then conducted to produce two well-balanced pseudo-cohorts across all potential confounders, and this approach reduced selection bias [28, 29]. IPTW resulted in well-balanced groups across all potential confounders (Table 1). After IPTW, the mean age and CCI score were  $75.53 \pm 7.41$  years and  $1.85 \pm 1.69$ , respectively, for SSG, and  $76.14 \pm 7.61$  years and  $1.83 \pm 1.80$ , respectively, for NSSG. The distributions of other demographic and clinical characteristics, including monthly income, incidence year, coronary artery disease, and hypertension, were also well-balanced.

The weighted incidence rates of dementia, AD, and vascular dementia were 34.3, 1.3, and 3.2 per 1000 person-years, respectively, for SSG, and 41.2, 7.7, and 2.6 per 1000 person-years, respectively, for NSSG (Table 2). The Kaplan–Meier curve analysis showed that the cumulative incidence rate of AD (Fig. 2B, log-rank test,  $p=0.009$ ), but not dementia (Fig. 2A, log-rank test,  $p=0.241$ ) and vascular dementia (Fig. 2C, log-rank test,  $p=0.761$ ), in SSG was significantly lower than that in NSSG over the 16-year follow-up period. The average follow-up durations for dementia, AD, and vascular dementia were  $4.13 \pm 3.60$ ,  $4.53 \pm 3.70$ , and  $4.57 \pm 3.71$  years, respectively. The Cox proportional hazards regression analysis revealed that SSG had a reduced HR for developing AD [HR (95% CI) 0.17 (0.04–0.69)], but not for dementia [HR (95% CI) 0.83 (0.61–1.12)] and vascular dementia [HR (95% CI) 1.18 (0.44–3.16)], compared with NSSG (Table 2). Further Fine–Gray subdistribution hazard competing risk regression analysis demonstrated that SSG had a reduced sHR for developing dementia [sHR (95% CI) 0.74 (0.55–0.99)] and AD [sHR (95% CI) 0.15 (0.04–0.61)], but not for vascular dementia [sHR (95% CI) 1.07 (0.40–2.86)], compared with NSSG (Table 2).

### Discussion

The major finding of this population-based propensity-weighted cohort study is that iNPH patients who received CSF shunt surgery exhibited a reduced risk of the subsequent development of dementia and AD compared with those in NSSG. Dementia is a general term for several dementing disorders, and AD is the most common form

**Table 1** Demographic and clinical characteristics of the two study groups before and after stabilized inverse probability of treatment weighting (IPTW)

	Before IPTW			After IPTW		
	Shunt surgery (n = 376)	No-shunt surgery (n = 1677)	SMD	Shunt surgery (n = 375.0)	No-shunt surgery (n = 1677.4)	SMD
Age (year)						
Average	73.69 ± 7.18	76.54 ± 7.62	<b>0.385</b>	75.53 ± 7.41	76.14 ± 7.61	0.081
60–69	108 (28.7%)	343 (20.5%)	<b>0.193</b>	81 (21.6%)	367 (21.9%)	0.008
70–79	185 (49.2%)	704 (42%)	<b>0.145</b>	166 (44.3%)	728 (43.4%)	0.018
80+	83 (22.1%)	630 (37.6%)	<b>0.344</b>	128 (34.1%)	582 (34.7%)	0.012
Sex						
Male	215 (57.2%)	953 (56.8%)	0.007	210 (56.1%)	954 (56.9%)	0.016
Female	161 (42.8%)	724 (43.2%)	0.007	165 (43.9%)	723 (43.1%)	0.016
Monthly income (NTD)						
≤ 15839	59 (15.7%)	405 (24.2%)	<b>0.213</b>	83 (22.2%)	379 (22.6%)	0.010
15840–24999	222 (59%)	906 (54%)	<b>0.101</b>	209 (55.6%)	922 (55%)	0.013
25000–39999	53 (14.1%)	207 (12.3%)	0.052	47 (12.6%)	213 (12.7%)	0.004
≥ 40000	42 (11.2%)	159 (9.5%)	0.056	36 (9.6%)	164 (9.8%)	0.004
Incidence year						
2001–2006	114 (30.3%)	535 (31.9%)	0.034	119 (31.7%)	531 (31.6%)	0.002
2007–2012	115 (30.6%)	606 (36.1%)	<b>0.118</b>	133 (35.5%)	588 (35.1%)	0.009
2013–2018	147 (39.1%)	536 (32%)	<b>0.150</b>	123 (32.8%)	558 (33.3%)	0.011
Comorbidity						
CCI score	2.06 ± 1.8	1.78 ± 1.8	<b>0.155</b>	1.85 ± 1.69	1.83 ± 1.80	0.011
Coronary artery disease	54 (14.4%)	309 (18.4%)	<b>0.110</b>	66 (17.6%)	296 (17.7%)	0.002
Chronic kidney disease	31 (8.2%)	136 (8.1%)	0.005	29 (7.7%)	137 (8.2%)	0.017
Hypertension	261 (69.4%)	1027 (61.2%)	<b>0.172</b>	231 (61.6%)	1052 (62.7%)	0.024
Type II diabetes mellitus	105 (27.9%)	499 (29.8%)	0.040	109 (29.1%)	493 (29.4%)	0.007

Continuous variables are presented as mean ± standard deviation. Categorical variables are presented as frequencies and percentages. NTD, new Taiwan dollar. CCI, Charlson comorbidity index. A standardized mean difference (SMD) ≤ 0.1 indicates a negligible difference between the two study groups. SMD > 0.1 is indicated by bold font

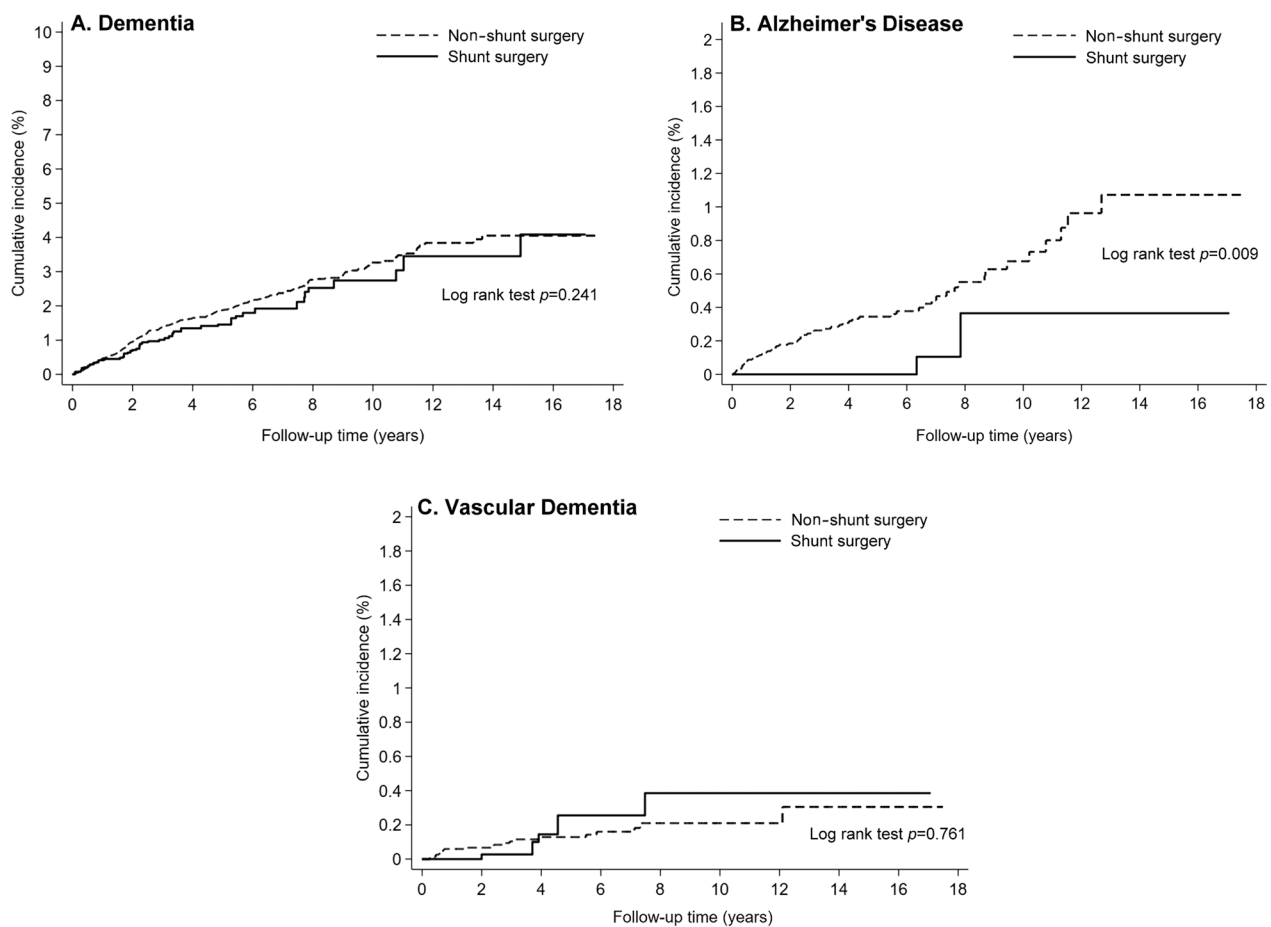
**Table 2** IPTW survival analysis estimating the HR and sHR of dementia, AD, and vascular dementia among patients with iNPH

Outcomes	Number of patients	Event	Person years	Incidence rate†	HR (95% CI)	sHR (95% CI)
Dementia						
Non-shunt surgery	1677.4	294.3	7152.4	41.2	1	1
Shunt surgery	375.0	49.1	1432.1	34.3	0.83 (0.61, 1.12)	0.74 (0.55, 0.99)*
Alzheimer's disease						
Non-shunt surgery	1677.4	60.0	7807.6	7.7	1	1
Shunt surgery	375.0	2.0	1556.8	1.3	0.17 (0.04, 0.69)*	0.15 (0.04, 0.61)*
Vascular dementia						
Non-shunt surgery	1677.4	20.9	7921.3	2.6	1	1
Shunt surgery	375.0	4.9	1550.5	3.2	1.18 (0.44, 3.16)	1.07 (0.40, 2.86)

IPTW, inverse probability of treatment weighting. iNPH, idiopathic normal-pressure hydrocephalus. †, per 1000 person-years. HR, hazard ratio obtained from Cox proportional hazards regression analysis. sHR, subdistribution hazard ratio obtained from Fine–Gray subdistribution hazard competing risk regression analysis. \*,  $p < 0.05$

of dementia [32]. Our finding of reduced risk of dementia was based on the results that demonstrated that SSG exhibited a decrease in sHR. Our finding of reduced risk

of AD was based on the results that revealed that SSG presented decreases in the cumulative incidence rate over the 16-year follow-up period, HR, and sHR.



**Fig. 2** Kaplan–Meier curves showing the cumulative incidence of dementia (A), AD (B), and vascular dementia (C) in patients with iNPH. Patients were classified into two study groups: one group received CSF shunting placement surgery (SSG) and the other did not receive CSF shunting placement surgery (NSSG)

Several pieces of evidence suggest that iNPH patients exhibit a high risk of developing dementing disorders. A prospective study enrolled clinically suspected iNPH patients [13] and found that nearly 60% of these patients became demented, with AD as the most common cause of dementia, followed by vascular dementia, within a median follow-up interval of 4.8 years. The authors also reported that the demented population comprised 73%, 63%, and 46% of non-shunted, shunt-unresponsive, and shunt-responsive patients, respectively. Another study [14] documented that 63% of shunt-responsive iNPH patients had clinical dementia, with AD and vascular dementia as the most common diagnoses, at the end of a median follow-up interval of 4.8 years. A retrospective cohort study [15] found that 21% of shunted iNPH patients developed clinical AD during a median follow-up of 5.3 years. This occurrence was significantly increased compared with that of the general population. Several studies have shown that brain biopsies obtained during CSF shunt surgery in iNPH patients exhibit a high

prevalence of typical AD histopathological findings, suggesting pre-stage AD in iNPH patients [16, 17].

A report from the ISHCSF task force [18] indicated that AD and vascular dementia are two common comorbidities of iNPH, and it proposed that iNPH may increase the risk of AD and other dementing disorders. In particular, iNPH and AD have been hypothesized to have a common pathophysiological basis in CSF circulatory dysfunction and failure, and the risk of AD may increase once iNPH takes hold [19]. Collectively, these studies suggest that iNPH patients are predisposed to developing dementing disorders. However, no study has yet compared the risk of developing dementing disorders between shunted and non-shunted patients. Our findings provide evidence to suggest the clinical benefits of CSF shunt surgery in iNPH patients.

Several studies [1, 6–10] have reported that CSF shunt surgery improves the motor (gait disturbance and urinary incontinence) and cognitive disabilities of iNPH patients for the first 2–3 years, but the response rate varies

widely among studies. Several clinical predictors have been applied to preoperatively select iNPH patients who can potentially respond to CSF shunt surgery [6, 7, 11]. If iNPH patients undergo CSF shunt surgery, then they will typically need the procedure for the rest of their lives and require regular monitoring. Decision-making typically involves the neurologist, patient, and his/her family members, and it is based on the assessment of the risks and benefits of CSF shunt surgery [11, 12]. Our findings may provide valuable information for assessing the benefit-to-risk profile of CSF shunt surgery in iNPH patients.

The exact reasons why CSF shunt surgery reduces the risk of dementia and AD in iNPH patients remain unclear. The enlarged cerebral ventricles due to excess CSF in iNPH may damage the brain, leading to neurodegenerative diseases [7]. In addition, impaired vascular compliance in iNPH may trigger a cascade of events that lead to irreversible dementia [3]. Furthermore, the accumulation of amyloid due to CSF circulatory dysfunction and failure in iNPH may substantially increase the risk of AD [19]. Theoretically, CSF drainage by shunt implantation in these patients may improve the size of cerebral ventricles [7], vascular compliance [3], and CSF circulatory function [19], leading to reduced risk of dementia and AD.

In the current study, iNPH patients were defined as subjects aged  $\geq 60$  years and without several known causes for iNPH within 1 year prior to the diagnosis of iNPH. The two original study cohorts (before IPTW) exhibited certain differences in demographic and clinical data, particularly age and comorbidity, which might contribute to the risk of dementia and AD [32]. We then performed stabilized IPTW by using the propensity score to achieve a balanced distribution of confounders across the two study groups and minimize selection bias [28, 29]. The use of stabilized IPTW in the pseudo data preserves the sample size of the original data, produces an appropriate estimation of the variance of the major effect, and estimates HR with less bias compared with other cohort-matching methods [28, 29]. In the current study, we initially used the Kaplan–Meier method and Cox proportional hazards regression model to estimate the cumulative incidence rate during the follow-up period and the risk of dementing disorders, respectively. The two methods are commonly applied to the analysis of survival data, but they do not consider competing risk, which is an event whose occurrence precludes the occurrence of the primary event of interest [31]. To address this issue, we then performed the Fine–Gray subdistribution hazard competing risk regression model, while considering death as a competing event; this method provides direct estimates of absolute risks for developing the primary event of interest [30, 31].

In this study, we identified iNPH using diagnoses G91.0–G91.2. G91.2 is regarded as iNPH, rest being other cases of communicating hydrocephalus. Some clinicians tended to be conservative when giving the diagnosis of iNPH. As such, we pooled diagnoses G91.0–G91.2 together, but excluded patients who had traumatic brain injury, brain tumor, central nervous system infection, spontaneous intracerebral hemorrhage, or stroke with infarction. We sub-analyzed data just for G91.2 and the data are similar to those with pooled diagnoses G91.0–G91.2 (Additional file 2: Table S2).

It should be noted that the study period of this investigation was from 2000 to 2018. As such, the nomenclature and definitions of dementia and AD were based on the Guidelines available during that period [25, 26] and are different from those defined by the updated Guidelines. For example, the National Institute on Aging and Alzheimer’s Association Research Framework suggests that AD is defined by its underlying pathologic processes that can be documented by biological evidence obtained from postmortem or *in vivo* examination of biomarkers [33]. Clinically diagnosed AD should be referred to as Alzheimer’s clinical syndrome, but not as AD or some modified form of AD [33]. Also, the latest edition of the Diagnostic and Statistical Manual of Mental Disorders (DSM-V), a publication by the American Psychiatric Association (APA), recommends that dementia should be referred to as a major neurocognitive disorder, regardless of etiology [34]. Dementia, as the diagnosis, can be used and it should be referred to as a group of symptoms that can accompany certain diseases or conditions, but not a disease itself [34]. Due to these differences in nomenclature and definitions of dementia and AD, findings in this study should be interpreted with caution.

### Strength and limitations

The strength of this work is that it involved a large number of subjects with follow-up over significant periods, and thus, it can be very informative. However, the current study has some limitations. First, our retrospective study was subject to several biases, including data collection and differences between the two study cohorts. We believed that these biases can be minimized via stabilized IPTW. However, unmeasured or inherent differences between the two study cohorts may still account for our observed results. Second, covariates, such as disease severity, smoking, lifestyle, and education, may be related to the development of dementing disorders. Also, detailed medical data are required to comprehend how the diagnosis of iNPH, dementia, AD, or vascular dementia was made. However, the health insurance database used in this study does not register these data. Third, we aimed to explore the risk of developing dementing

disorders subsequent to the diagnosis of iNPH, and thus, we excluded patients who were diagnosed with dementia, AD, or vascular dementia prior to the diagnosis of iNPH. For this reason, our findings cannot be generalized to these iNPH patients and the incidence of iNPH may have been underestimated. Moreover, the incidence rate of iNPH reported in this study is believed to be lower than the actual incidence rate. The precise epidemiology of iNPH in our country remains to be defined.

## Conclusions

In conclusion, our results suggest that CSF shunt surgery is associated with reduced risks of the subsequent development of dementia and AD in iNPH patients. Our findings may provide a new perspective for assessing the benefit-to-risk profile of CSF shunt surgery among iNPH patients.

## Abbreviations

iNPH	Idiopathic normal-pressure hydrocephalus
CSF	Cerebrospinal fluid
AD	Alzheimer's disease
HR	Hazard ratio
sHR	Subdistribution hazard ratio
CI	Confidence interval
NHIRD	National Health Insurance Research Database
ICD-9-CM	International classification of diseases, ninth revision, clinical modification
ICD-10-CM	International classification of diseases, tenth revision, clinical modification
ATC	Anatomical therapeutic chemical
CCI	Charlson comorbidity index
IPTW	Stabilized inverse probability of treatment weighting
SMD	Standardized mean difference

## Supplementary Information

The online version contains supplementary material available at <https://doi.org/10.1186/s12987-024-00517-9>.

**Additional file 1: Table S1.** ICD-9-CM codes, ICD-10-CM codes, procedure codes, or ATC codes for the diagnosis, surgeries, or drugs searched in this study.

**Additional file 2: Table S2.** IPTW survival analysis estimating the HR and sHR of dementia, AD, and vascular dementia among patients with iNPH (subanalysed data just for G91.2).

## Acknowledgements

The authors are grateful to Professor Yu Ru Kou, who provided critical and essential suggestions for polishing this manuscript.

## Author contributions

STT: conceptualization, writing, and editing the manuscript. PHT, WTH, and JHW: methodology, formal analysis, writing, and editing the manuscript. BRH: conceptualization. HYH: conceptualization, and editing the manuscript. STT: project administration and funding acquisition. PHT, WTH, JHW, BRH, HYH, and STT: approval of the final version of the manuscript.

## Funding

This research was funded by the Buddhist Tzu Chi Medical Foundation (TCMF-EP 111-032 and TCMMP 112-01-01) and Hualien Tzu Chi General Hospital (TCRD-111-046).

## Availability of data and materials

The data generated in this study are available upon request from the corresponding author.

## Declarations

### Ethics approval and consent to participate

This study was approved by the Institutional Review Board of Hualien Tzu Chi Hospital (IRB110-161-C). For this retrospective study, informed consent was waived in accordance with the institutional guidelines.

### Consent for publication

Not applicable.

### Competing interests

The authors declare that they have no competing interests.

### Author details

<sup>1</sup>Department of Neurosurgery, Hualien Tzu Chi Hospital, Buddhist Tzu Chi Medical Foundation, Hualien 970, Taiwan. <sup>2</sup>Department of Nursing, Hualien Tzu Chi Hospital, Buddhist Tzu Chi Medical Foundation, Hualien 970, Taiwan. <sup>3</sup>Institute of Medical Sciences, Tzu Chi University, Hualien 970, Taiwan. <sup>4</sup>Department of Medical Research, Hualien Tzu Chi Hospital, Buddhist Tzu Chi Medical Foundation, 707, Sec 3, Zhongyang Road, Hualien 970, Taiwan. <sup>5</sup>Department of Neurosurgery, Taichung Tzu Chi Hospital, Buddhist Tzu Chi Medical Foundation, Taichung 427, Taiwan. <sup>6</sup>School of Medicine, Tzu Chi University, Hualien 970, Taiwan.

Received: 26 November 2023 Accepted: 26 January 2024

Published online: 14 February 2024

## References

- Toma AK, Papadopoulos MC, Stapleton S, Kitchen ND, Watkins LD. Systematic review of the outcome of shunt surgery in idiopathic normal-pressure hydrocephalus. *Acta Neurochir (Wien)*. 2013;155(10):1977–80. <https://doi.org/10.1007/s00701-013-1835-5>.
- Giordan E, Palandri G, Lanzino G, Murad MH, Elder BD. Outcomes and complications of different surgical treatments for idiopathic normal pressure hydrocephalus: a systematic review and meta-analysis. *J Neurosurg*. 2018;1:1–13. <https://doi.org/10.3171/2018.5.JNS1875>.
- Bonney PA, et al. Pathophysiological mechanisms underlying idiopathic normal pressure hydrocephalus: a review of recent insights. *Front Aging Neurosci*. 2022;14:866313. <https://doi.org/10.3389/fnagi.2022.866313>.
- Martín-Láez R, Caballero-Arzapalo H, López-Menéndez LÁ, Arango-Lasprilla JC, Vázquez-Barquero A. Epidemiology of idiopathic normal pressure hydrocephalus: a systematic review of the literature. *World Neurosurg*. 2015;84(6):2002–9. <https://doi.org/10.1016/j.wneu.2015.07.005>.
- Andersson J, Rosell M, Kockum K, Lilja-Lund O, Söderström L, Laurell K. Prevalence of idiopathic normal pressure hydrocephalus: a prospective, population-based study. *PLoS ONE*. 2019;14(5):e0217705. <https://doi.org/10.1371/journal.pone.0217705>.
- Nakajima M, et al. Guidelines for management of idiopathic normal pressure hydrocephalus (Third Edition): Endorsed by the Japanese society of normal pressure hydrocephalus. *Neurol Med Chir (Tokyo)*. 2021;61(2):63–97. <https://doi.org/10.2176/nmc.st.2020-0292>.
- Halperin JJ, Kurlan R, Schwalb JM, Cusimano MD, Gronseth G, Gloss D. Practice guideline: Idiopathic normal pressure hydrocephalus: response to shunting and predictors of response: report of the guideline development, dissemination, and implementation subcommittee of the American academy of neurology. *Neurology*. 2015;85(23):2063–71. <https://doi.org/10.1212/WNL.0000000000002193>.
- Trungu S, et al. Clinical outcomes of shunting in normal pressure hydrocephalus: a multicenter prospective observational study. *J Clin Med*. 2022;11(5):1286. <https://doi.org/10.3390/jcm11051286>.



9. Kahlon B, Sjunnesson J, Rehnrona S. Long-term outcome in patients with suspected normal pressure hydrocephalus. *Neurosurgery*. 2007;60(2):327–32. <https://doi.org/10.1227/01.NEU.0000249273.41569.6E>.
10. Luciano M, et al. Placebo-controlled effectiveness of idiopathic normal pressure hydrocephalus shunting: a randomized pilot trial. *Neurosurgery*. 2023;92(3):481–9. <https://doi.org/10.1227/neu.000000000002225>.
11. Sahuquillo J, Poca MA. To shunt or not to shunt patients with idiopathic normal pressure hydrocephalus? A reappraisal of an old question. *J Clin Med*. 2020;9(12):4120. <https://doi.org/10.3390/jcm9124120>.
12. Gontsarova A, Richardson D, Methley AM, Tsang K, Pearce R, Carswell C. Shunting for idiopathic normal pressure hydrocephalus. *Cochrane Database Syst Rev*. 2022;2022(3):CD014923. <https://doi.org/10.1002/14651858.CD014923>.
13. Koivisto AM, et al. High risk of dementia in ventricular enlargement with normal pressure hydrocephalus related symptoms. *J Alzheimers Dis*. 2016;52(2):497–507. <https://doi.org/10.3233/JAD-150909>.
14. Koivisto AM, et al. Poor cognitive outcome in shunt-responsive idiopathic normal pressure hydrocephalus. *Neurosurgery*. 2013;72(1):1–8. <https://doi.org/10.1227/NEU.0b013e31827414b3>.
15. Luikku AJ, et al. Predicting development of Alzheimer's disease in patients with shunted idiopathic normal pressure hydrocephalus. *J Alzheimers Dis*. 2019;71(4):1233–43. <https://doi.org/10.3233/JAD-190334>.
16. Bech-Azeddine R, Høgh P, Juhler M, Gjerris F, Waldemar G. Idiopathic normal-pressure hydrocephalus: clinical comorbidity correlated with cerebral biopsy findings and outcome of cerebrospinal fluid shunting. *J Neurol Neurosurg Psychiatry*. 2007;78(2):157–61. <https://doi.org/10.1136/jnnp.2006.095117>.
17. Libard S, Alafuzoff I. Alzheimer's disease neuropathological change and loss of matrix/neuropil in patients with idiopathic normal pressure hydrocephalus, a model of Alzheimer's disease. *Acta Neuropathol Commun*. 2019;7(1):98. <https://doi.org/10.1186/s40478-019-0748-9>.
18. Malm J, et al. Influence of comorbidities in idiopathic normal pressure hydrocephalus—research and clinical care. A report of the ISHCSF task force on comorbidities in INPH. *Fluids Barriers CNS*. 2013;10(1):22. <https://doi.org/10.1186/2045-8118-10-22>.
19. Silverberg GD, Mayo M, Saul T, Rubenstein E, McGuire D. Alzheimer's disease, normal-pressure hydrocephalus, and senescent changes in CSF circulatory physiology: a hypothesis. *Lancet Neurol*. 2003;2(8):506–11. [https://doi.org/10.1016/s1474-4422\(03\)00487-3](https://doi.org/10.1016/s1474-4422(03)00487-3).
20. Hsieh CY, et al. Taiwan's national health insurance research database: past and future. *Clin Epidemiol*. 2019;11:349–58. <https://doi.org/10.2147/CLEP.S196293>.
21. Lin LY, Warren-Gash C, Smeeth L, Chen PC. Data resource profile: the national health insurance research database (NHIRD). *Epidemiol Health*. 2018;40:e2018062. <https://doi.org/10.4178/epih.e2018062>.
22. Williams MA, Sharkey P, van Doren D, Thomas G, Rigamonti D. Influence of shunt surgery on healthcare expenditures of elderly fee-for-service Medicare beneficiaries with hydrocephalus. *J Neurosurg*. 2007;107(1):21–8. <https://doi.org/10.3171/JNS-07/07/0021>.
23. Ishikawa M, et al. Guidelines for management of idiopathic normal pressure hydrocephalus. *Neurol Med Chir (Tokyo)*. 2008;48(Suppl):S1–23. <https://doi.org/10.2176/nmc.48.s1>.
24. Mori E, et al. Guidelines for management of idiopathic normal pressure hydrocephalus. *Neurol Med Chir*. 2012;52(11):775–809. <https://doi.org/10.2176/nmc.52.775>.
25. Sorbi S, et al. EFNS-ENS Guidelines on the diagnosis and management of disorders associated with dementia. *Eur J Neurol*. 2012;19(9):1159–79. <https://doi.org/10.1111/j.1468-1331.2012.03784.x>.
26. McKhann G, et al. Clinical diagnosis of Alzheimer's disease: report of the NINCDS-ADRDA Work Group under the auspices of department of health and human services task force on Alzheimer's disease. *Neurology*. 1984;34(7):939–44. <https://doi.org/10.1212/wnl.34.7.93>.
27. Chui HC, et al. Criteria for the diagnosis of ischemic vascular dementia proposed by the State of California Alzheimer's disease diagnostic and treatment centers. *Neurology*. 1992;42(3 Pt 1):473–80. <https://doi.org/10.1212/wnl.42.3.473>.
28. Chesnaye NC, et al. An introduction to inverse probability of treatment weighting in observational research. *Clin Kidney J*. 2022;15(1):14–20. <https://doi.org/10.1093/cjk/sfab158>.
29. Xu S, Ross C, Raebel MA, Shetterly S, Blanchette C, Smith D. Use of stabilized inverse propensity scores as weights to directly estimate relative risk and its confidence intervals. *Value Health*. 2010;13(2):273–7. <https://doi.org/10.1111/j.1524-4733.2009.00671.x>.
30. Fine JP, Gray RJ. A proportional hazards model for the subdistribution of a competing risk. *J Am Stat Assoc*. 1999;94:496–509.
31. Austin PC, Lee DS, Fine JP. Introduction to the analysis of survival data in the presence of competing risks. *Circulation*. 2016;133(6):601–9. <https://doi.org/10.1161/CIRCULATIONAHA.115.017719>.
32. Arvanitakis Z, Shah RC, Bennett DA. Diagnosis and management of dementia: review. *JAMA*. 2019;322(16):1589–99. <https://doi.org/10.1001/jama.2019.4782>.
33. Jack CR Jr, et al. NIA-AA research framework: toward a biological definition of Alzheimer's disease. *Alzheimers Dement*. 2018;14(4):535–62. <https://doi.org/10.1016/j.jalz.2018.02.018>.
34. American Psychiatric Association. *Diagnostic and statistical manual of mental disorders*. Washington DC: American Psychiatric Association Publishing; 2022. <https://doi.org/10.1176/appi.books.9780890425787>.

### Publisher's Note

Springer Nature remains neutral with regard to jurisdictional claims in published maps and institutional affiliations.